

# Preface

## CO-ORDINATORS

Tim Ruffer  
Cathy Markall

## EDITOR

Kathy Dyke

## CONTRIBUTORS

Gordon Giles  
John Henderson  
Daniel Moulton  
David Ogden  
Andrew Pratt  
Jonathan Robinson  
Andrew Robson  
Daniel Soper  
Geoff Weaver

## CONTACT

Sunday by Sunday  
19 The Close  
Salisbury  
Wilts  
SP1 2EB  
Tel: +44 (0)1722 424848  
Fax: +44 (0)1722 424849  
Email: sbs@rscm.com  
Website: www.rscm.com/sbys

## REVIEWS

Please send materials for review to:  
Julian Elloway, Reviews Editor  
Highmead  
Field Road  
Stroud  
Glos  
GL5 2JA  
Tel/Fax: +44 (0)1453 840388  
Email: cmqreviews@rscm.com

## ORDERS AND

## SALES ENQUIRIES

RSCM Music Direct  
Norwich Books & Music  
13a Hellesdon Park Road  
Norwich  
NR6 5DR  
Tel: +44 (0)845 021 7726  
Fax: +44 (0)845 021 8826  
Email: musicdirect@rscm.com  
Website: www.rscm.com/shop

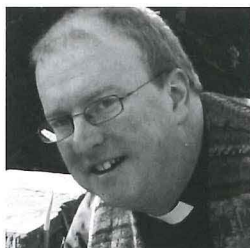
We are delighted to welcome several new members to the *Sunday by Sunday* team. Choosing the hymns and songs from this issue are the Revd Andrew Pratt, Methodist hymn writer; Jonathan Robinson, director of music at All Saints, Lindfield; and Andrew Robson, who directs music at the 11am Mass at St Osmund's RC Church, Salisbury. Along with the Revd Dr Gordon Giles, current team member, they bring a wide knowledge of congregational music across different church traditions and denominations. To support the editorial process, Daniel Soper is providing technical assistance checking and compiling the hymn and song lists. We hope that you will find the choices refreshed by this new input.

As previously announced, from this issue we will list from the hymn book *Laudate* (code 'L'), which the recent hymn book survey indicated was popular among Roman Catholic readers. It replaces *Sing Glory*, which is now out of print and was only used by a small number of people.

The sharp-eyed may notice another change to the coding in the hymn and song lists. Formerly the code 'pc' in the 'position' column was used to indicate a 'post-Communion' hymn. To allow for different service patterns, and particularly for those using the lists to plan non-Eucharistic services, we have changed this to 'se' to indicate a hymn suitable for 'sending out'.

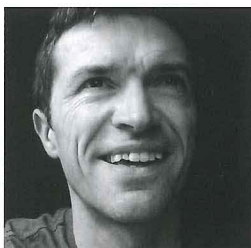
Some of you wrote to us about the organ selections, which we have begun to categorize according to difficulty level, in response to the survey. Some of you missed the variety of repertoire provided previously, so we have increased the number of selections and added a fourth category. We hope this will suit organists of different ability levels and welcome your feedback.

## Feature writers



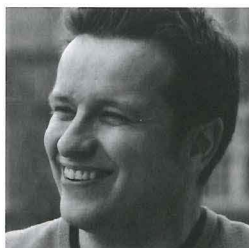
### THE REVD DR GORDON GILES

is Vicar of St Mary Magdalene, Enfield and Director of Post-Ordination Training for the Edmonton Area of the Diocese of London. He has written various books on church music and hymnody published by BRF and SPCK, and was on the editorial team of the new *Ancient & Modern*.



### JONATHAN ROBINSON

is Director of Music at All Saints, Lindfield in West Sussex and Chair of the Sussex Area RSCM Committee. Prior to graduating from the Music & Worship course at London School of Theology he was Resident Musician at Iona Abbey and enjoys planning creative and alternative worship with music from different traditions.



### DANIEL MOULTON

is a freelance organist who performs and records throughout the UK, Europe and Australia, including frequent work for the BBC. He teaches for the RCO Organ Academy in London and is Associate Head of Organ Studies at Birmingham Conservatoire. He is a tutor and writer for the RSCM's Church Music Skills programme.  
[www.danielmoulton.com](http://www.danielmoulton.com)

RSCM